

About Applied Analysis Inc.

AAI was founded in 1984 by Dr. Robert Huguenin to solve spectral problems of national interest. Our corporate headquarters is in Westford, MA with employees in Dayton, OH; Washington, DC; and Houston, TX. In addition to *iCee*[™], AAI offers a wide range of products and services including:

- Environmental Products
- Coastal and Inland Bathymetry
- Disaster Response
- Land Cover and Species-Level Mapping
- Oil and Gas Exploration
- Technology Innovation
- Defense Applications Module

iCee[™] is a plug-in extension to your spectral image processing application that enables the analyst to autonomously, accurately and completely restore MSI/HSI imagery to units of material reflectance. The true benefit of *iCee*[™] is the improvement to change detection, signature derivation, feature extraction, scene-to-scene non-uniformity correction, classification, calibrated indices (e.g. NDVI) and many other products that the analyst will produce.

Now available on GSA

iCee[™]

Restores spectral imagery to units of the material's actual reflectance



AAI – Celebrating 25 years of service to the Defense, Intelligence, and Industry

Contact Us:

For more information about *iCee*[™] contact:

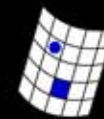
Sales

(978) 399-1140

info@discoveraai.com

Or visit our website at

www.discoveraai.com



Applied Analysis Inc.

Turning spectral imagery into solutions

Over 25 years servicing defense, intelligence and industry

iCee™

Restores spectral imagery to units of material's actual reflectance

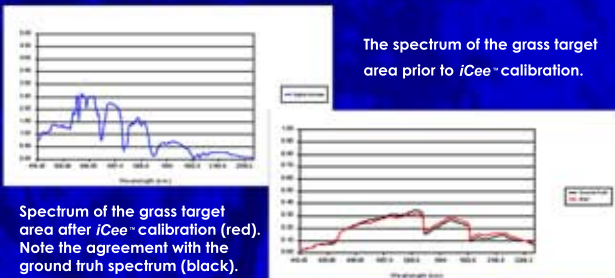


Introducing iCee™ - the most powerful analyst tool available today

- Autonomous – point and click
- HSI and MSI (including RGB)
- Removes atmospheric effects
- Corrects for sensor functions
- Provides critical statistics on the goodness of the image
- Supports most overhead and aerial imagers
 - Enhances performance of several applications, including:

- Change detection
- Signature derivation
- Feature extraction
- Scene-to scene non-uniformity correction
- Classification
- Crop estimation
- Calibrated indices (e.g. NDVI) – Scene-to-scene, sensor-to-sensor
- Subpixel analysis
- Material Identification
- Many others

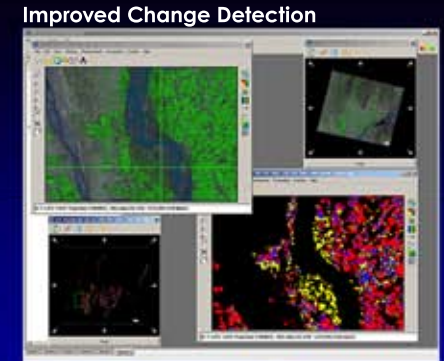
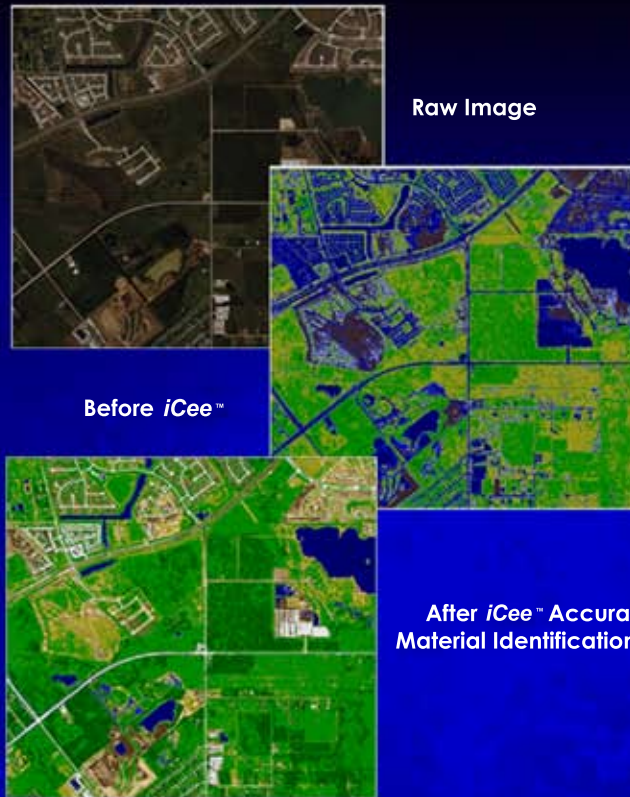
Independently tested and shown to be the best by most leading GIS application and image providers



Signature Derivation and Extraction

Now on GSA

Erdas 9.x (2010 coming in 2010)
SOCET GXP v3.02
Windows command line (for use with ESRI, ENVI, AGITK, COMET, Opticks, Others) Individual, site, server, trial and reseller licenses available



QuickBird™ multispectral image of the Stennis Space Center before (left) and after (below) iCee™ calibration. Although the reduction in haze is a benefit of iCee™, the greatest benefit is the calibration to units of material reflectance.

